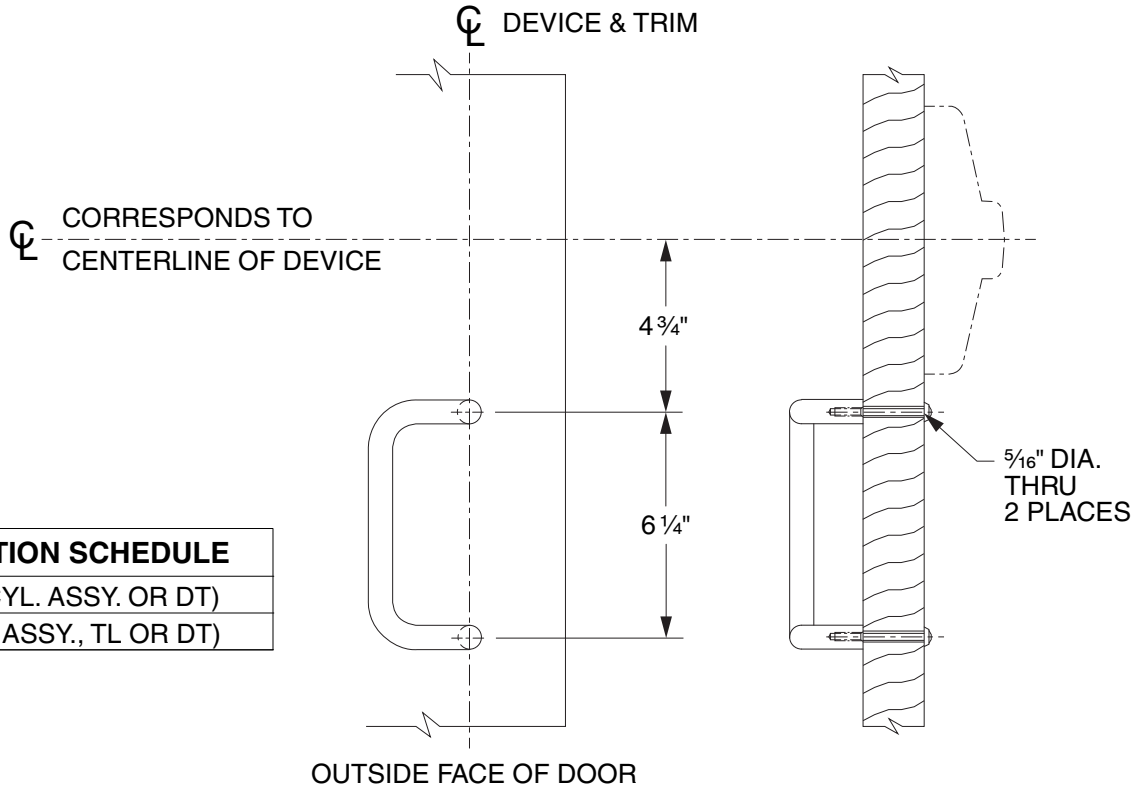


# 392-6 (PULL BELOW CENTER)

FOR 388 CYLINDER ASSY, TL OR DT APPLICATIONS

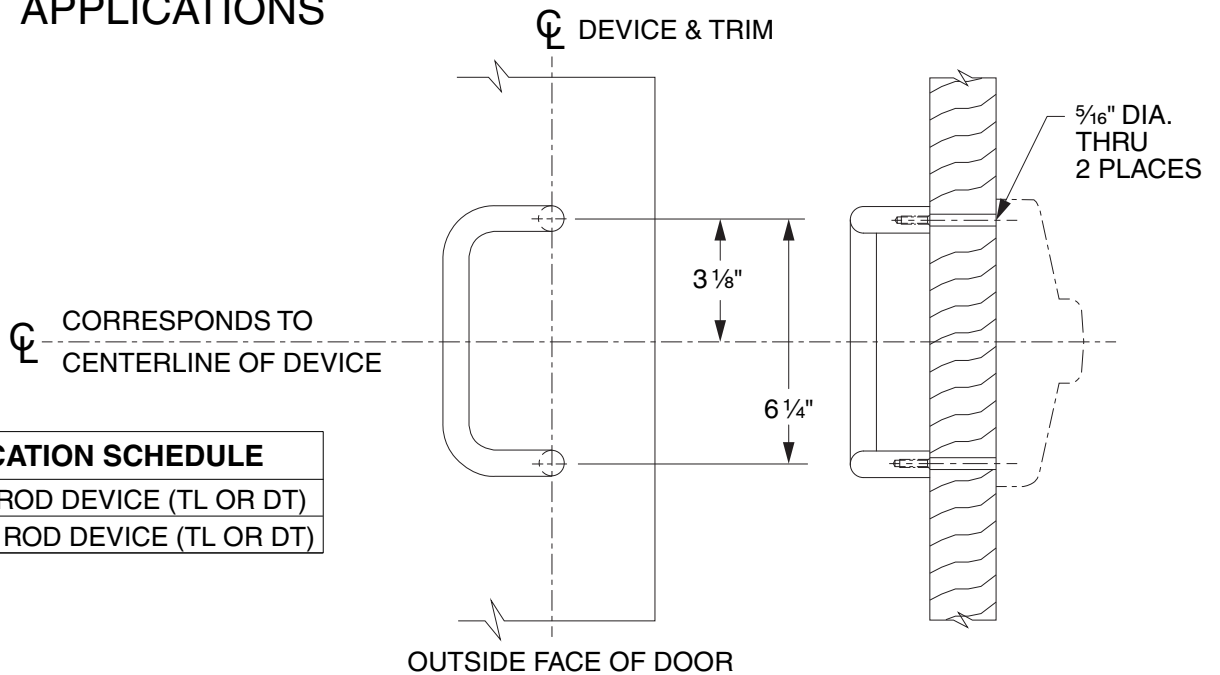


DEVICE APPLICATION SCHEDULE
33A/35A RIM (388 CYL. ASSY. OR DT)
33/3527A (388 CYL. ASSY., TL OR DT)

LHR SHOWN  
RHR OPPOSITE

# 392-6 (PULL ON CENTER)

FOR TL OR DT APPLICATIONS



DEVICE APPLICATION SCHEDULE
33/3527A VERTICAL ROD DEVICE (TL OR DT)
33/3547A-WDC VERT. ROD DEVICE (TL OR DT)

LHR SHOWN  
RHR OPPOSITE

392-6 Pull  
(Wood Door)

**VON DUPRIN®**

NOTES: SEE MASTER SHEET #10001 FOR SUGGESTED REINFORCING

TEMPLATE  
NUMBER:

W20454\_c

DATE:  
05-31-13