



Surface mounted closer

# 4110 Series

Overview

The 4110 is LCN's best performing heavy duty closer with an adjustable spring and possible hold-open point beyond 140 degrees, meeting ADA requirements. Backed by a 30 year warranty, the cast iron body and all weather fluid offer versatility in high traffic applications.



Cylinder

### 4111(6)-3071

Cast iron cylinder assembly

**Handing**

Handed

**Sizing**

Adjustable spring size 1-5, or sized 6

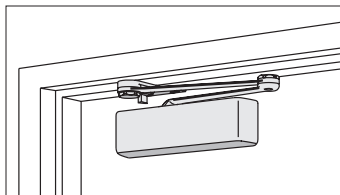
Includes patented Green Dial

- 4111 (adjustable from size 1 to 5)
- 4116 (Size 6; DEL, SHCUSH or HCUSH arm not available)

Available cylinder options

DEL	Delayed action cylinder
AVB	Advanced variable backcheck

Mounting



Parallel arm (push side)

### Finishes

#### Powder coat finishes



**689**  
Aluminum



**690**  
Statuary Bronze



**691**  
Light Bronze



**693**  
Black



**695**  
Dark Bronze



**696**  
Brass

150+ additional custom colors available using the RAL numbering system

#### Metal plated finishes



**632**  
Bright Brass



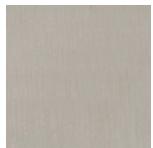
**633**  
Satin Brass



**639**  
Satin Bronze



**616**  
Satin Bronze, Blackened



**646**  
Satin Nickel



**651**  
Bright Chrome



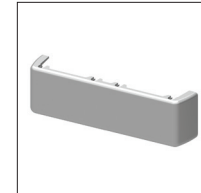
**652**  
Satin Chrome

#### Available finish options

MTLPC	Brite metallic: Custom powder coat finish, which resembles that of 651 or 652 plated finish.
SRI	For installations where a higher level of protection against weather conditions, or the effects of a potentially corrosive atmosphere is required, LCN offers a special rust inhibiting (SRI) process. Ferrous metal components receive an SRI pretreatment and a standard powder coat finish of your choice, or a custom powder coat finish for a nominal additional cost. Closers treated with the SRI process exceed the 100 hour protection level available with standard LCN powder coated finishes.

### Covers

#### Standard cover

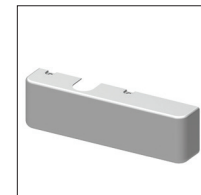


#### 4110-72

##### Plastic cover

- Non-handed
- Standard

#### Optional cover



#### 4110-72MC

##### Metal cover

- Handed
- Required for plated finishes and custom powder coat finishes
- Optional

### Arms



**4110-3049EDA**  
**Hold-open arm**

- Handed
- Optional
- Provides hold-open function, adjustable at shoe



**4110-3049FL**  
**Fusible link arm**

- Handed
- Releases hold-open function adjustable at shoe when exposed to temperatures above 165° F
- Optional
- NOTE: Check local codes before specifying FL arms. NOT A life safety product!



**4110-3077CNS**  
**Cush-N-Stop arm**

- Non-handed
- Features solid forged steel main arm and forearm with built-in stop in soffit shoe



**4110-3077EDA**  
**Extra duty arm**

- Non-handed
- Features forged, solid steel main and forearm for potentially abusive installations



**4110-3077EDA/ 62G**  
**Extra duty arm**

- Non-handed
- Features forged, solid steel main and forearm for potentially abusive installations
- Optional 4110-62G thick hub shoe for blade stop clearance



**4110-3049CNS**  
**HCUSH arm**

- Non-handed
- Provides hold-open function with templated stop/ hold-open points.
- Handle controls hold-open function



**4110-3077SCNS**  
**Spring CUSH arm**

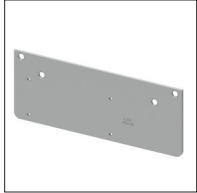
- Non-handed
- For abusive applications features solid forged steel main arm and forearm with spring loaded stop in the soffit shoe
- Optional



**4110-3049SCNS**  
**Spring HCUSH arm**

- Non-handed
- For abusive applications features solid forged steel main arm and forearm with spring loaded stop in the soffit shoe
- Handle controls hold-open function
- Optional

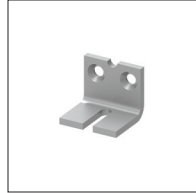
## Installation accessories



### 4110-18

#### Plate

- Required for push side mount where top rail is less than 5 1/8" (130 mm), measured from the stop
- Requires minimum 2" (51 mm) minimum top rail



### 4110-30

#### CUSH shoe support

- Provides anchorage for fifth screw used with CUSH arm, where reveal is less than 3 1/16" (78 mm)



### 4110-61

#### Blade stop spacer

- Lowers parallel arm shoe to clear 1/2" (13 mm) blade stop



### 4110-419

#### PA flush panel adapter

- Provides horizontal mounting surface for CUSH shoe on single rabbetted or flush frame

## Fasteners

Self-reaming and tapping screws included standard

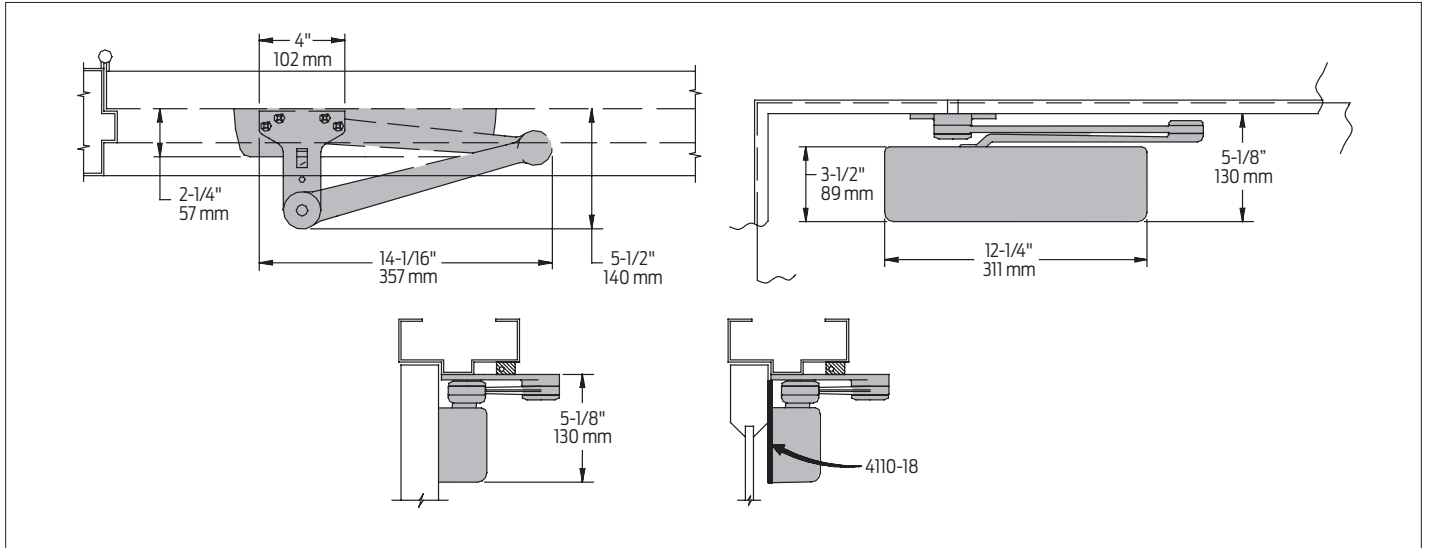
### Fastener pack options

TBSRT	TB <sup>1</sup> with self-reaming and tapping screws
WMS	Wood and machine screw
TBWMS	TB <sup>1</sup> , wood and machine screw
TORX	TORX machine screw
TBTRX	TB <sup>1</sup> and TORX machine screw

<sup>1</sup> Specify door thickness if other than 1 3/4"

Dimensions and mounting

Parallel arm (push side) mounting



## Specifications

Accessibility	Available with less than 5.0 lbs. opening force on 36" door
Certifications/ approvals	<ul style="list-style-type: none"> <li>■ Grade 1 - ANSI A156.4</li> <li>■ UL 10C</li> <li>■ Meets BAA - Buy American Act</li> </ul>
Degree of operation	<p>EDA</p> <p>Max opening: 180°</p> <p>Hold open: 180°</p> <p>Cush</p> <p>Max opening: 110°</p> <p>Hold open: 110°</p>
Environmental conditions	<ul style="list-style-type: none"> <li>■ Approved for interior use</li> <li>■ Approved for exterior use (SRI coated only)</li> <li>■ LCN's standard all weather fluid performs to temperature ranges from 120°F (49°C) to -30°F (-35°C)</li> <li>■ LCN's powder coat finish surpasses 100 hours of salt spray which is over four times the ANSI standard for corrosion resistance.</li> </ul>
Warranty	30 years
Standard features	<ul style="list-style-type: none"> <li>■ Cast iron body</li> <li>■ Full complement bearing</li> <li>■ 1 1/2" diameter piston</li> <li>■ 1/16" diameter double heat treated pinion journal</li> </ul>