



▶ **DOCUMENT NUMBER:**
1998-065-A-10-06

▶ **REVISION:** A

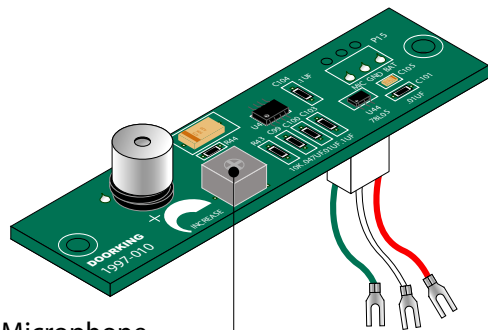
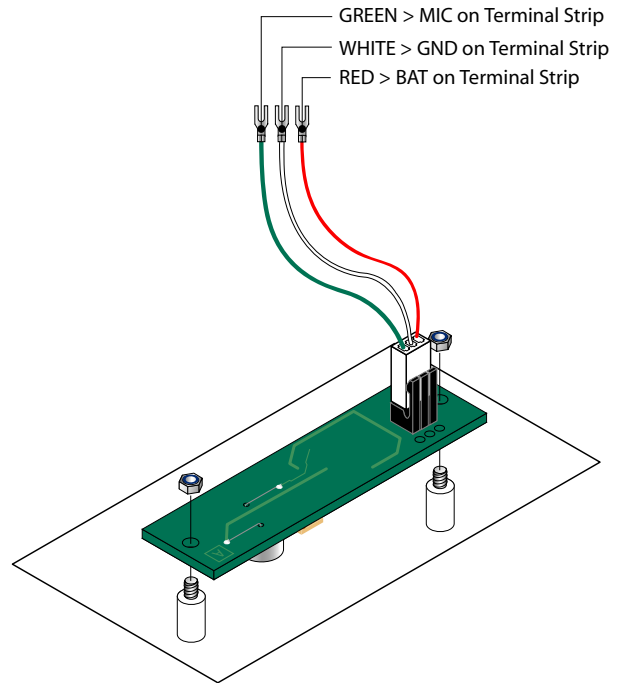
▶ **GROUP:**
Telephone Entry

▶ Microphone Installation

1. Remove microphone board.
2. Cut wire ties and remove wires.
3. Unscrew the wire terminals.
4. Screw new wire terminals to terminal strip.
5. Route wire harness through the wire shield.

NOTE: Do not screw the board down until the microphone volume sensitivity has been adjusted.

6. Install and fasten microphone board.



Microphone
Sensitivity Adjustment
(use philips screw driver)

Adjust Sensitivity

1. Use Phillips screwdriver to adjust the volume sensitivity.
2. Turn clockwise to increase the volume sensitivity.
3. Turn counter-clockwise to decrease the volume sensitivity.

