



Base pull-out system BPO II



OUR BASE PULLOUT COMBINES STYLE, CONVENIENCE, AND VERSATILITY



Advantages

- Slim, center-mounted frame offers easy access from left or right side.
- Create a custom storage solution to suit your needs in adding a choice of accessories.
- Runner provides a smooth soft-close
- 60 lb (27 kg) load rating
- Height adjustable frame from 24" to 32" (610mm to 813mm)
- Offered in trendy silver gray finish.
- Bottom and top mounted to give more stability



Silver Gray finish



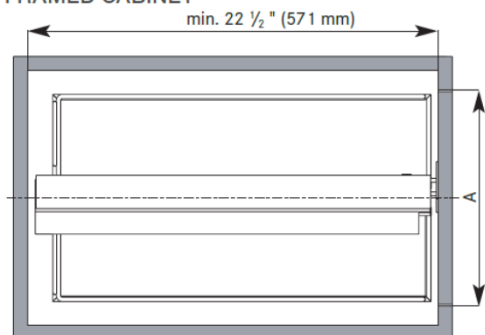
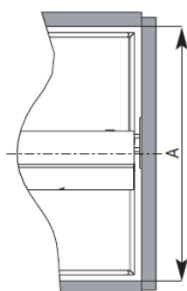
The wide front fixing bracket is required for all cabinets that are wider than 15" (381mm). Optional for less than 15" (381mm). This will replace the original lower bracket only.



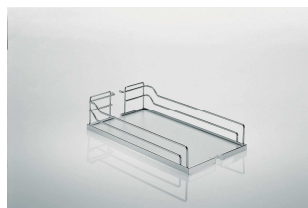
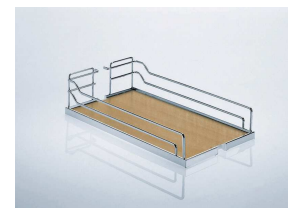
Can only be used for frame height of 28 1/8" (715mm) or more

Code	Description	Finish	Product Width	Product Depth	Product Height
2663100	Frame BPO II	Silver Gray	3 3/4" (95mm)	22" (518mm)	24" to 32" (610mm to 813mm)
2647100	Wide door bracket	Silver Gray	5 1/2" (140mm)		1 1/2" (38mm)
4255100	Additional hook	Silver Gray			4" (102mm)

Technical information

FRAMED CABINET

FRAMELESS CABINET

Min. interior dimensions
Min. width : depends of the basket or accessory selected

Min. depth : 22 ½" (571mm)

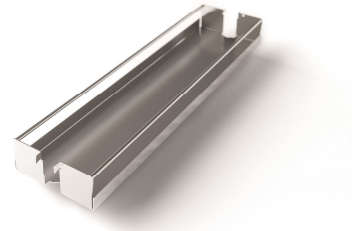
Min. height : 24 to 32 (610mm to 813mm)

Gray/Chrome

Maple/Chrome

Set of 2 Arena baskets

Min. opening width (A)	Shelf dimension (W x D x H)	Gray/Chrome	Maple/Chrome
4 ½" (114mm)	4" x 20 3/8" x 4 1/8" (102 x 518 x 105mm)	33140100	33140150
5 ½" (140mm)	5" x 20 3/8" x 4 1/8" (102 x 518 x 105mm)	24140100	24140150
7 ½" (191mm)	7" x 20 3/8" x 4 1/8" (102 x 518 x 105mm)	34140100	34140150
8 ½" (216mm)	8" x 20 3/8" x 4 1/8" (102 x 518 x 105mm)	25140100	25140150
10 ½" (267mm)	10" x 20 3/8" x 4 1/8" (102 x 518 x 105mm)	35140100	35140150
11 ½" (292mm)	11" x 20 3/8" x 4 1/8" (102 x 518 x 105mm)	26140100	26140150
13 ½" (343mm)	13" x 20 3/8" x 4 1/8" (102 x 518 x 105mm)	36140100	36140150
14 ½" (368mm)	14" x 20 3/8" x 4 1/8" (102 x 518 x 105mm)	27140100	27140150
16 ½" (419mm)	16" x 20 3/8" x 4 1/8" (102 x 518 x 105mm)	37140100	37140150
17 ½" (445mm)	17" x 20 3/8" x 4 1/8" (102 x 518 x 105mm)	28140100	28140150
19 ½" (495mm)	19" x 20 3/8" x 4 1/8" (102 x 518 x 105mm)	38140100	38140150
20 ½" (521mm)	20" x 20 3/8" x 4 1/8" (102 x 518 x 105mm)	39140100	39140150
22 ½" (572mm)	22" x 20 3/8" x 4 1/8" (102 x 518 x 105mm)	40140100	40140150

Set of 2 metal basket

Min. opening Width (A)	Product Width	Silver Gray
3 7/8" (98mm)	3 3/8" (86mm)	25474100
4 1/2" (112mm)	4" (102mm)	25475100
5 1/2" (140mm)	5" (127mm)	25476100
7 1/2" (191mm)	7" (178mm)	25477100



Silver Gray

Accessories

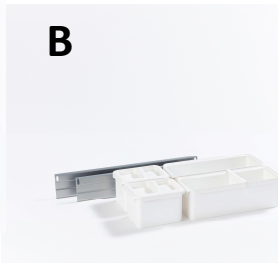
Transform your BPO II into a functional storage system that will answer to your specific needs.



Set Youboxx 1

Includes :

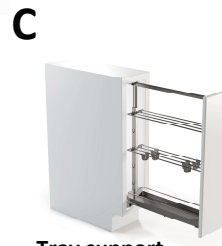
- 2 x 1 liter boxes
- 1 x 2,1 liter box
- 2 x 2 liter boxes
- 1 x knife holder insert
- 2 x lids
- 2 traverse rails



Set Youboxx 2:

Includes :

- 2 x 1 liter boxes
- 2 x 2,1 liter boxes
- 2 x lids
- 1 x divider, large
- 2 x traverse rails



Tray support

Includes :

- 2 x wire shelves
- 1 x metal shelf
- 25556100** : 4 plastic clips
- 25557100** : 6 plastic clips
- 25558100** : 8 plastic clips



Spice tray

Ref.	Min. opening	Silver Gray	Description	Product dimensions W x D x H
A	10 1/2" (267mm)*	25464100	Set Youbox 1	4 1/2" x 17 1/4" x 3 3/4" (114mm x 438mm x 95mm)
B	10 1/2" (267mm)*	25465100	Set Youbox 2	4 1/2" x 17 1/4" x 3 3/4" (114mm x 438mm x 95mm)
C	3 7/8" (98mm)	25556100	Tray support 3 3/8"	3 3/8" x 20 3/8" x min. 8" (86mm x 518mm x min. 203mm)
C	5 1/2" (140mm)	25557100	Tray support 5"	5" x 20 3/8" x min. 8" (127mm x 518mm x min. 203mm)
C	7 1/2" (191mm)	25558100	Tray support 7"	7" x 20 3/8" x min. 8" (178mm x 518mm x mon. 203mm)
D	10 1/2" (267mm)**	25771100	Spice tray BPO II 4 1/2"	4 1/2" x 20 1/2" x 1 1/2" (114mm x 521mm x 38mm)

* (A or B) The minimum opening is based on installing 1 set of rails on each side of the frame (Recommended)

** (D) The min. opening is based for 2 spice trays, one on each side (Recommended)