



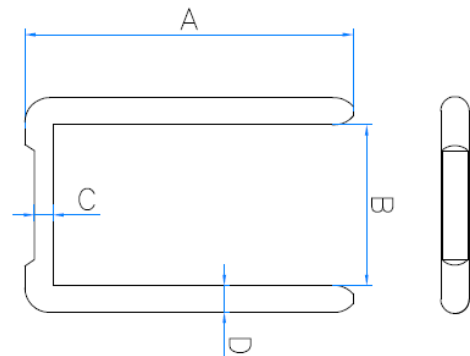
19551-19556 Cable Staples

Steel Staples



FEATURES:

- 1/2" & 9/16" Steel Staples
- Non-Insulated Nail-In Staples
- Designed for Nonmetallic and Armored Cable
- UL Listed



Cat. No	Size	Quantity	NM Cable Range	AC Cable Range	Dimensions			
					A	B	C	D
19556	1/2"	100 - Box	14/2 - 12/2	0.46" - 0.521"	0.996"	0.728"	0.09"	0.102"
19555	1/2"	500 - Box	14/2 - 12/2	0.46" - 0.521"	0.996"	0.728"	0.09"	0.102"
19554	1/2"	5000 - Pail	14/2 - 12/2	0.46" - 0.521"	0.996"	0.728"	0.09"	0.102"
19553	9/16"	100 - Box	14/2 - 10/3	0.521" - 0.588"	1.24"	0.795"	0.09"	0.122"
19552	9/16"	500 - Box	14/2 - 10/3	0.521" - 0.588"	1.24"	0.795"	0.09"	0.122"
19551	9/16"	5000 - Pail	14/2 - 10/3	0.521" - 0.588"	1.24"	0.795"	0.09"	0.122"